

SMALL
COFFEE
99¢

A green 7-Eleven coffee cup is shown next to a wooden spoon filled with coffee beans, all set against a background of coffee beans. The 7-Eleven logo is in the bottom right corner.

1/4 lb. Big Bite
& Big Gulp
\$2.22

A Big Gulp cup and a Big Bite sandwich are featured. The 7-Eleven logo is in the bottom right corner.

JACK LINKS
TERRY BY
STEAK BUDGETS
\$5.99

Jack Link's steak packages are shown. The 7-Eleven logo is in the bottom right corner.

Donut
Save \$2
on Coffee & King Donut Bundle

A donut and a coffee cup are shown. The 7-Eleven logo is in the bottom right corner.

self!
2/\$3

Two cans of self! are shown. The 7-Eleven logo is in the bottom right corner.

Taste the Difference
Alliance
\$4.25

Two Alliance coffee cups are shown. The 7-Eleven logo is in the bottom right corner.

REV UP YOUR MORNING
\$5

A sandwich and a can of Monster Energy are shown. The 7-Eleven logo is in the bottom right corner.

BODY ARMOR NATURAL SUPER DRINK
2/\$3

Two cans of Body Armor are shown. The 7-Eleven logo is in the bottom right corner.

Monster Energy

Two cans of Monster Energy are shown.

RED BULL

Two cans of Red Bull are shown.

Turning Out the best items on the grill

Two hot dogs are shown. The 7-Eleven logo is in the bottom right corner.

Monster Energy
16 oz
2/\$4

Three cans of Monster Energy are shown. A large yellow starburst contains the price 2/\$4. The 7-Eleven logo is in the bottom right corner.

ULTIMATE PLUS CARWASH
\$14

A car is shown being washed. The 7-Eleven logo is in the bottom right corner.

Monster Energy

Three cans of Monster Energy are shown.

Rate Naturally
99¢

Two cans of Rate Naturally are shown. The 7-Eleven logo is in the bottom right corner.

Rise & Shine Breakfast Combo
\$3

A breakfast sandwich and a coffee cup are shown. The 7-Eleven logo is in the bottom right corner.

Stock-Up Sale
2/\$9

Two cans of Pepsi are shown. The 7-Eleven logo is in the bottom right corner.

or South of the Border?
Bacon, Egg & Cheese Croissant
Egg & Cheese Tornado

A croissant and a taco are shown. The 7-Eleven logo is in the bottom right corner.

FRESH!
Deli Sandwiches
Made to Order
SHEETS

A sandwich is shown. The 7-Eleven logo is in the bottom right corner.

Stock-Up Sale
2/\$9

Two cans of Pepsi are shown. The 7-Eleven logo is in the bottom right corner.

Coca-Cola
20-ounce varieties
2/\$3

Three 20-ounce bottles of Coca-Cola (zero, classic, and diet) are shown. A large yellow starburst contains the price 2/\$3. The 7-Eleven logo is in the bottom right corner.

UnitedMedia
SOLUTIONS
audio and visual messaging for business

In-Store Digital Signage Solutions

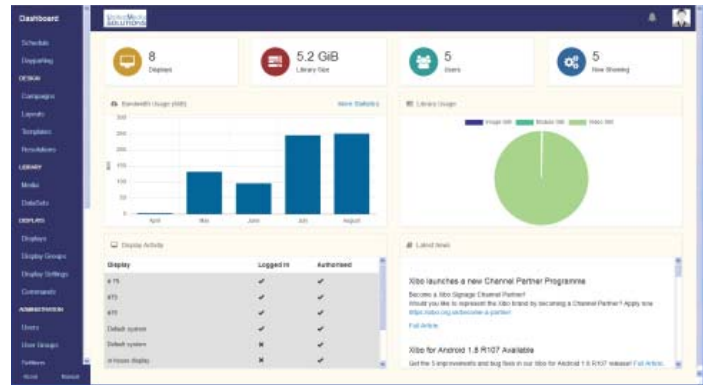
Take the mystery out of digital signage advertising with InfoLink, from United Media Solutions.







Created specifically for use with the InfoLink Music and Messaging System, and utilizing our patented programming features, the InfoLink Digital Signage Module makes your digital signage program easy to implement and even easier to manage.

Our software development team has designed an intuitive, user-friendly website that allows you to program and manage your digital signage program with just a few clicks.

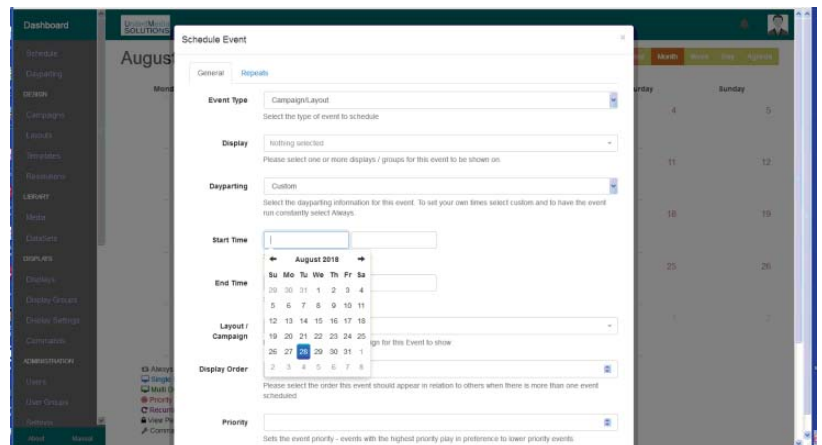
Easily upload signage designs from your advertising agency, from United Media Solutions' in-house design studio, or create your own digital signage from a variety of templates.

Once your digital signage library is complete, it is simple to schedule the days and times when the signs will rotate in your stores. Program them for immediate release, or schedule months in advance.



44	coast service.PNG	image		0:00:10	2.19 MB	Administrator		coast service.PNG
43	clients.PNG	image		0:00:10	1.72 MB	Administrator		clients.PNG
42	VBEnergy.jpg	image		0:00:10	1.12 MB	graham enterprise inc	Graham Corporate	VBEnergy.jpg
41	Dasani.jpg	image		0:00:10	350.26 KB	graham enterprise inc	Graham Corporate	Dasani.jpg
40	MonsterEnergy.jpg	image		0:00:10	464.57 KB	graham enterprise inc	Graham Corporate	MonsterEnergy.jpg
39	NeuroEnergyDrink.jpg	image		0:00:10	786.2 KB	graham enterprise inc	Graham Corporate	NeuroEnergyDrink.jpg

Showing 1 to 25 of 39 entries





We think you will agree the InfoLink Digital Signage Module, in conjunction with our time-tested and patented InfoLink system, is the easiest and most versatile on the market today.

digital signage is proven to enhance customer shopping experience

We invite you to call us for a personalized demonstration, and we'll show you how customized digital signage can work for your organization. It's truly a vision of the future!



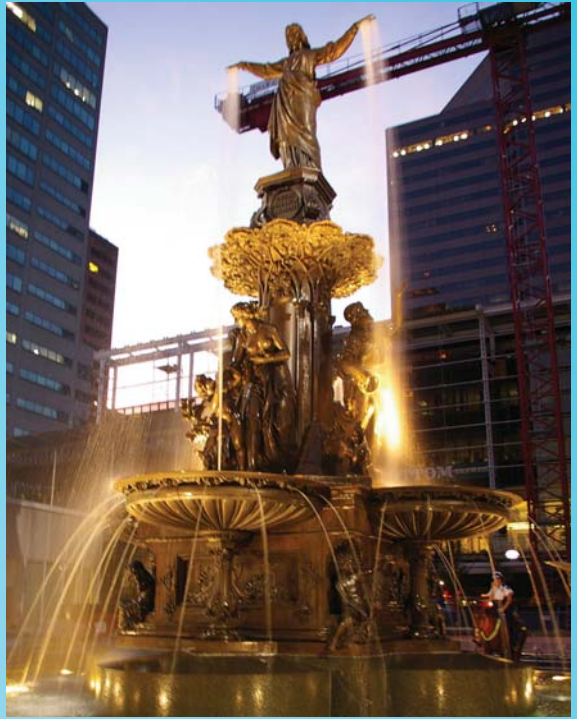
Since 1988, United Media Solutions has been at the forefront of technology in the on-hold industry, evolving to also provide overhead music and messaging. We remain on the cutting edge by now providing personalized digital signage programs for any size business.



complete and customized solutions

- Web-based or on-site control
- Music customization
- Acoustical matching and optimization
- Patented, centralized control center
- U.S. based network operations
- Maximum fidelity and clarity
- Factory trained technicians and installation experts





About United Media Solutions

We have always pursued new and exciting ways to help our customers reach their customers. By integrating overhead and on hold music and messaging, remote scheduling and remote diagnostics, we are able to offer the latest in public space advertising technology.

On-hold messages, overhead music, overhead messages, digital signage, all your public space advertising needs can be satisfied through one source: United Media Solutions. For more information call us at 1-800-373-8200.



For more information on Digital Signage
or any products and services offered by
United Media Solutions, please contact us at:
4120 Airport Road, Cincinnati, Ohio 45226
1-800-373-8200
www.unitedmediasolutions.info